

**Disclaimer:** All Plans, specifications, artistic renderings are shown in the brochure are only indicative and are subject to change as may be decided by the company or directed by any competent authority in the best interests of the development. Soft furnishing, furniture, and gadgets do not form a part of the offering. This document is conceptual and not a legal offering by the company and is to be used for general information only. Any interested party should verify all the information including designs, Plans, Specifications, Facilities, Features, Payment schedules, Terms of sales, etc. independently with the company prior to concluding any decisions for buying apartment in any of the towers. The user of the brochure confirms that they have not solely relied on this information for making any booking/purchase in any of the towers. Nothing on the brochure should be misconstrued as advertising, marketing, booking, selling, or an offer for sale or invitation to purchase a unit in any project by the company.

☎ 9706006656

Sunderpur, Near Quick Shoppe, R G Baruah Road, Guwahati 781 006, Assam



# Floor Plan Book





# Site Plan



## Legends

- |   |                          |
|---|--------------------------|
| 1. Commercial Block                             | 7. Badminton Court       |
| 2. Residential Entrance/Exit Gate               | 8. Peripheral Green      |
| 3. Temple                                       | 9. Stack Car Parking     |
| 4. Double Height Drop off Porch                 | 10. Visitors Car Parking |
| 5. Majestic Reception with Grand Entrance Lobby | 11. Emergency Exit Gate  |
| 6. Tennis Court                                 | 12. Commercial Exit      |



# Simplex Floor Plan

## 2nd Floor





# Simplex | 4 BHK | Type A Unit Plan



**4BHK  
TYPE A**

Carpet Area : 2786 Sq.Ft. (Inc. Dry Bal)  
 Balcony Area : 505 Sq.Ft.  
 Built Up Area : 3434 Sq.Ft.  
 Sale Area : 4567 Sq.Ft.



Key Plan (2nd Floor)



# Simplex | 4 BHK | Type B Unit Plan



**4BHK  
TYPE B**

Carpet Area : 2487 Sq.Ft. (Inc. Dry Bal)  
 Balcony Area : 305 Sq.Ft.  
 Built Up Area : 2925 Sq.Ft.  
 Sale Area : 3890 Sq.Ft.

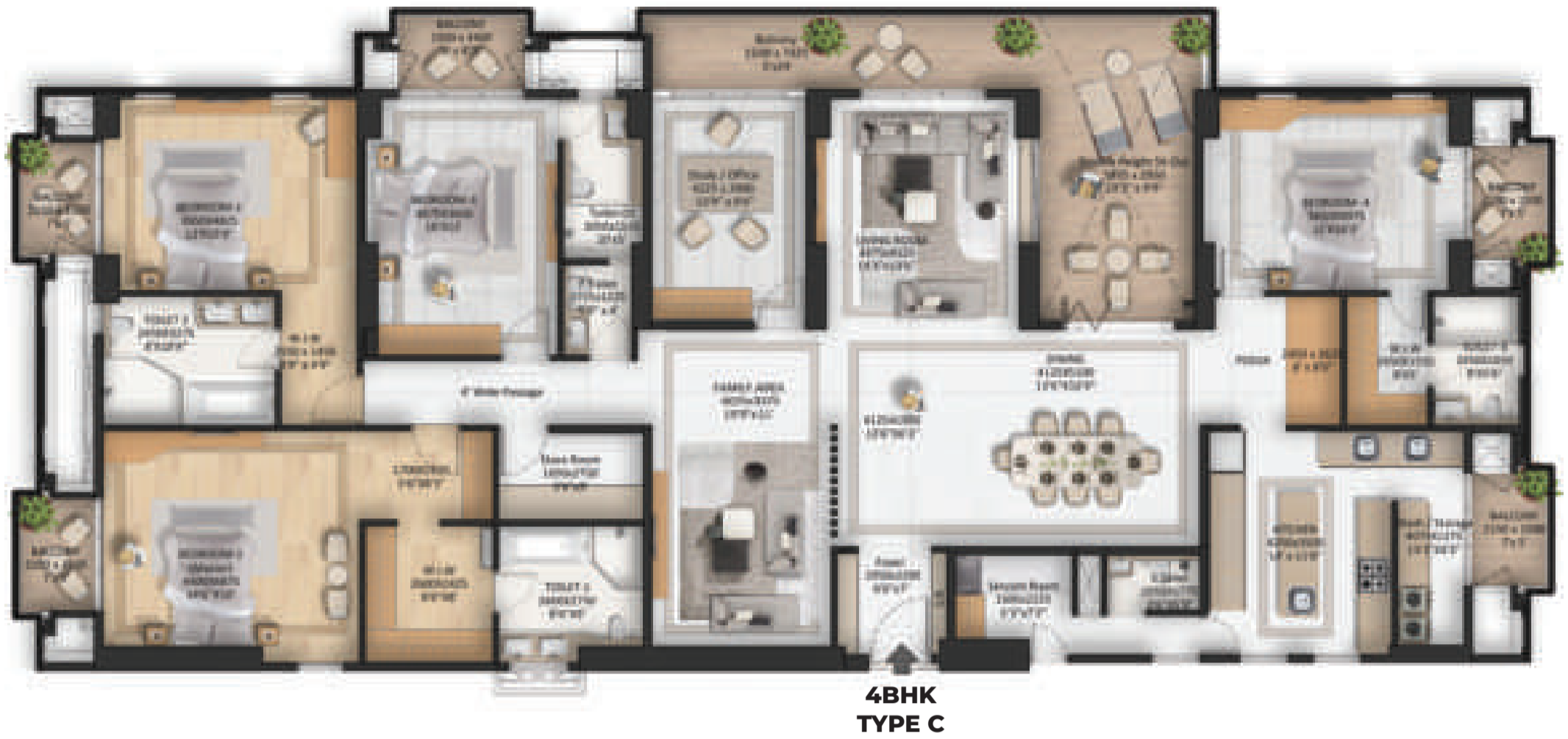


Key Plan (2nd to 9th Floor)





# Simplex | 4 BHK | Type C Unit Plan



Carpet Area : 2829 Sq.Ft. (Inc. Dry Bal)  
 Balcony Area : 493 Sq.Ft.  
 Built Up Area : 3472 Sq.Ft.  
 Sale Area : 4617 Sq.Ft.



Key Plan (2nd Floor)



# Simplex | 4 BHK | Type D Unit Plan

**4BHK  
TYPE D**



Carpet Area : 2324 Sq.Ft. (Inc. Dry Bal)  
 Balcony Area : 344 Sq.Ft.  
 Built Up Area : 2792 Sq.Ft.  
 Sale Area : 3713 Sq.Ft.



Key Plan (2nd to 9th Floor)





# Simplex Alternate Floor Plan

3rd, 5th, 7th Floor



## Simplex | 4 BHK | Type A Unit Plan



**4BHK  
TYPE A**

Carpet Area : 2627 Sq.Ft. (Inc. Dry Bal)  
 Balcony Area : 448 Sq.Ft.  
 Built Up Area : 3236 aSq.Ft.  
 Sale Area : 4303 Sq.Ft.



Key Plan (3rd, 5th & 7th Floor)





# Simplex | 4 BHK | Type C Unit Plan



**4BHK  
TYPE C**

Carpet Area : 2671 Sq.Ft. (Inc. Dry Bal)  
 Balcony Area : 440 Sq.Ft.  
 Built Up Area : 3281 Sq.Ft  
 Sale Area : 4363 Sq.Ft



Key Plan (3rd, 5th & 7th Floor)



## Simplex Alternate Floor Plan

**4th, 6th, 8th Floor**





# Simplex | 4 BHK | Type A Unit Plan



**4BHK  
TYPE A**

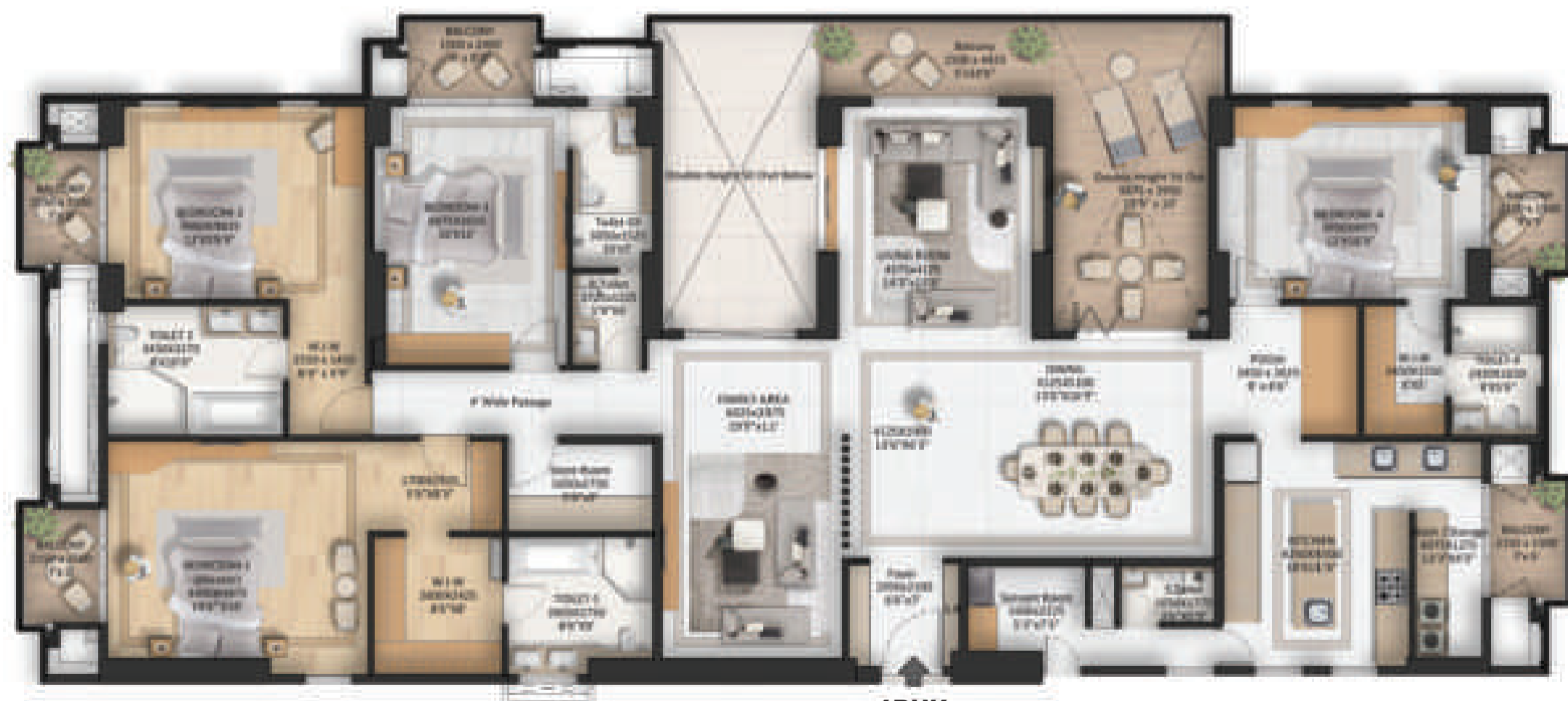
Carpet Area : 2627 Sq.Ft. (Inc. Dry Bal)  
 Balcony Area : 457 Sq.Ft.  
 Built Up Area : 3249 Sq.Ft  
 Sale Area : 4321 Sq.Ft



Key Plan (4th, 6th, 8th Floor)



# Simplex | 4 BHK | Type C Unit Plan



**4BHK  
TYPE C**

Carpet Area : 2677 Sq.Ft. (Inc. Dry Bal)  
 Balcony Area : 445 Sq.Ft.  
 Built Up Area : 3285 Sq.Ft.  
 Sale Area : 4369 Sq.Ft.



Key Plan (4th, 6th & 8th Floor)





# Simplex Floor Plan

## 9th Floor



## Simplex | 4 BHK | Type A Unit Plan



**4BHK  
TYPE A**

Carpet Area : 2786 Sq.Ft. (Inc. Dry Bal)  
 Balcony Area : 307 Sq.Ft.  
 Built Up Area : 3236 Sq.Ft  
 Sale Area : 4303 Sq.Ft



Key Plan (9th Floor)





# Simplex | 4 BHK | Type C Unit Plan



**4BHK  
TYPE C**

Carpet Area : 2829 Sq.Ft. (Inc. Dry Bal)  
 Balcony Area : 303 Sq.Ft.  
 Built Up Area : 3281 Sq.Ft.  
 Sale Area : 4363 Sq.Ft.



Key Plan (9th Floor)



## Club Havana - 10th Floor



### Legends

- |                           |  |                       |
|---------------------------|--|-----------------------|
| 1. Multigym               | 6. Wooden deck with lounge chairs                    | 10. Pool cabana       |
| 2. Yoga & meditation deck | 7. Temperature controlled swimming pool with jacuzzi | 11. Indoor games area |
| 3. Massage room           | 8. Kid's pool  | 12. Kids play area    |
| 4. Men's changing room    | 9. Raised deck with day beds                         | 13. Peripheral green  |
| 5. Women's changing room  |  | 14. Beverage counter  |

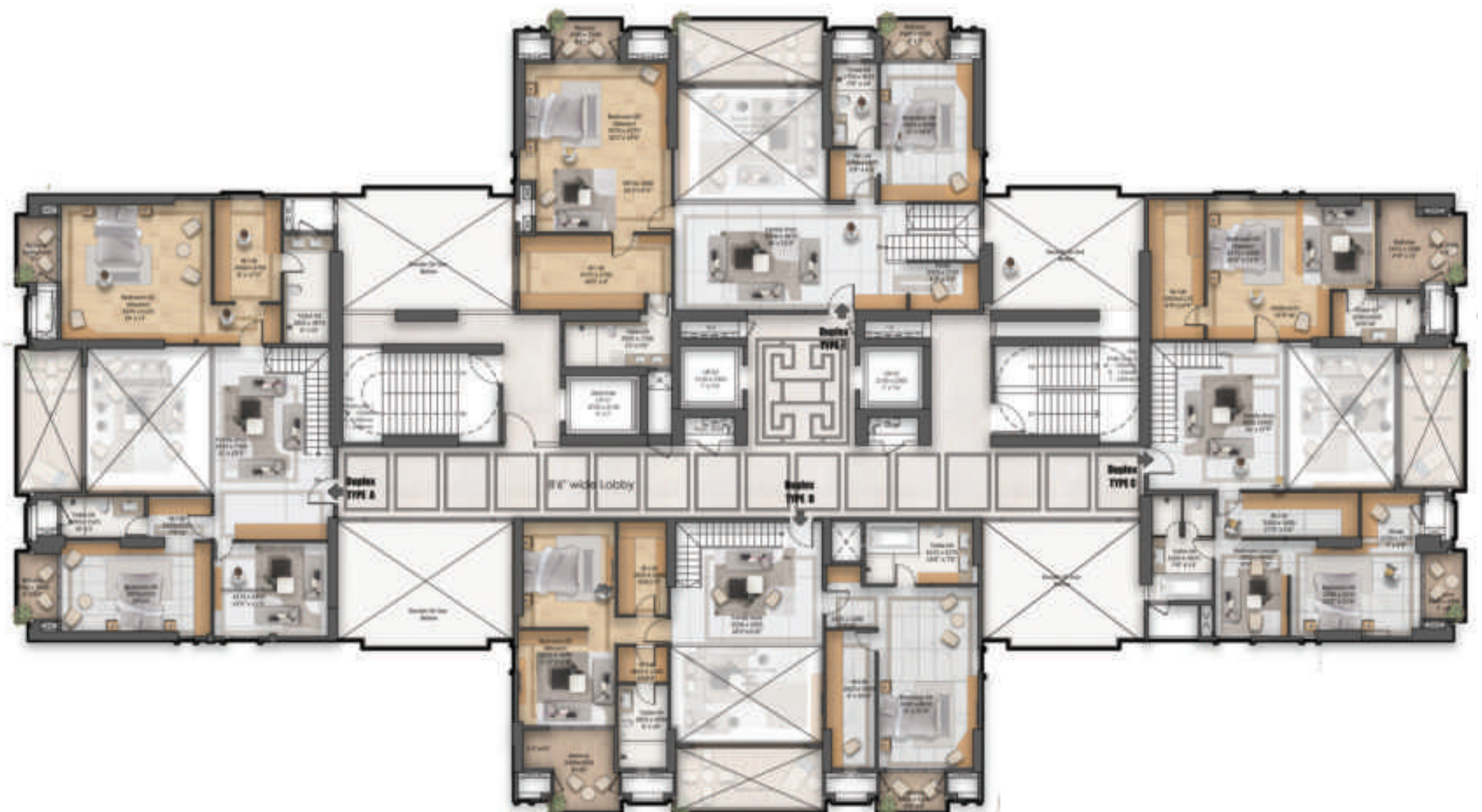




## Duplex Lower Floor plan - 11th, 13th, 15th

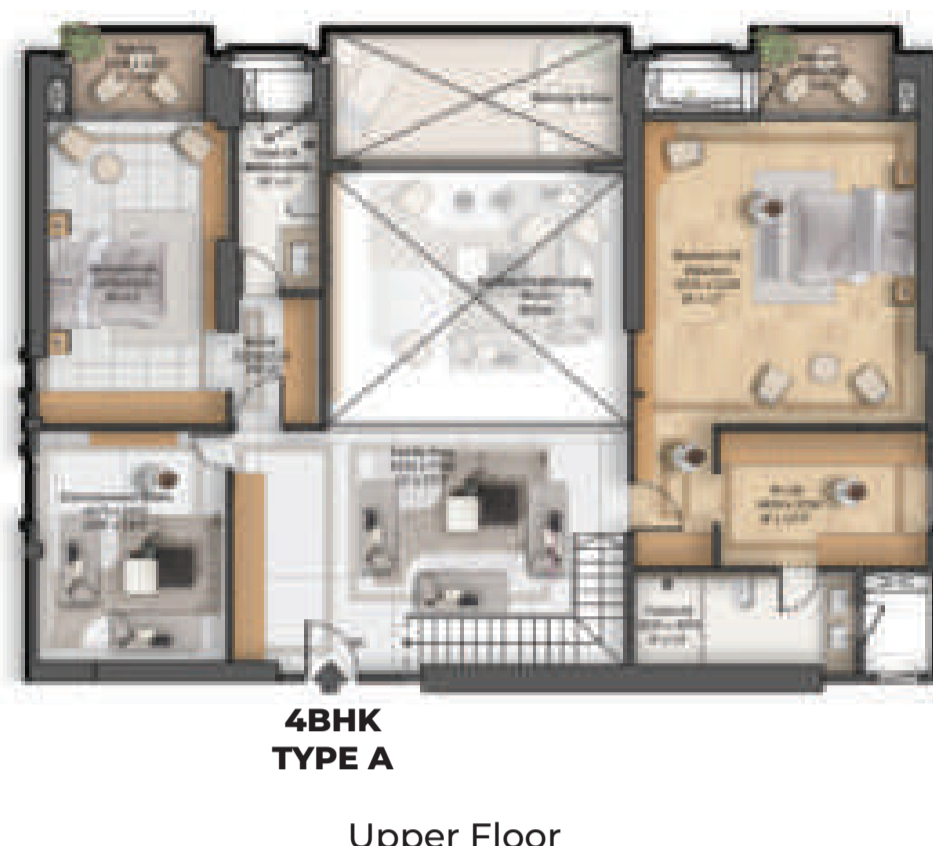


## Duplex Upper Floor - 12th, 14th, 16th





# Duplex | 4 BHK | Type A Unit Plan



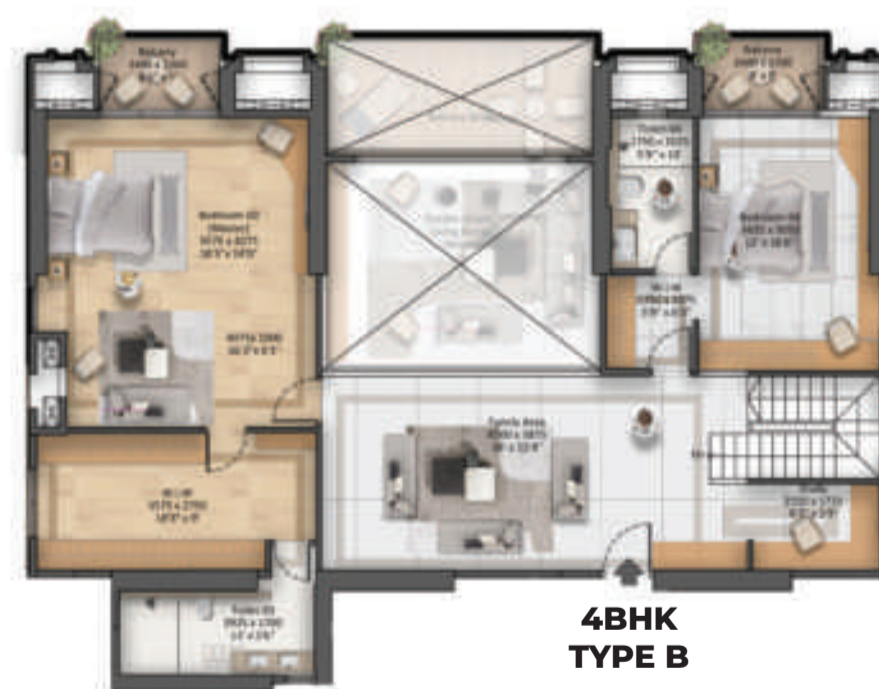
- Carpet Area : 2981 Sq.Ft. (Inc. Dry Bal)
- Balcony Area : 296 Sq.Ft.
- Built-Up Area : 3474 Sq.Ft.
- Double Height Sit-out : 316 Sq.Ft.
- Sale Area : 5040 Sq.Ft.



Key Plan (11-12,13-14,15-16)



# Duplex | 4 BHK | Type B Unit Plan



- Carpet Area : 3082 Sq.Ft. (Inc. Dry Bal)
- Balcony Area : 300 Sq.Ft.
- Built-Up Area : 3592 Sq.Ft.
- Double Height Sit-out : 298 Sq.Ft.
- Sale Area : 5174 Sq.Ft.

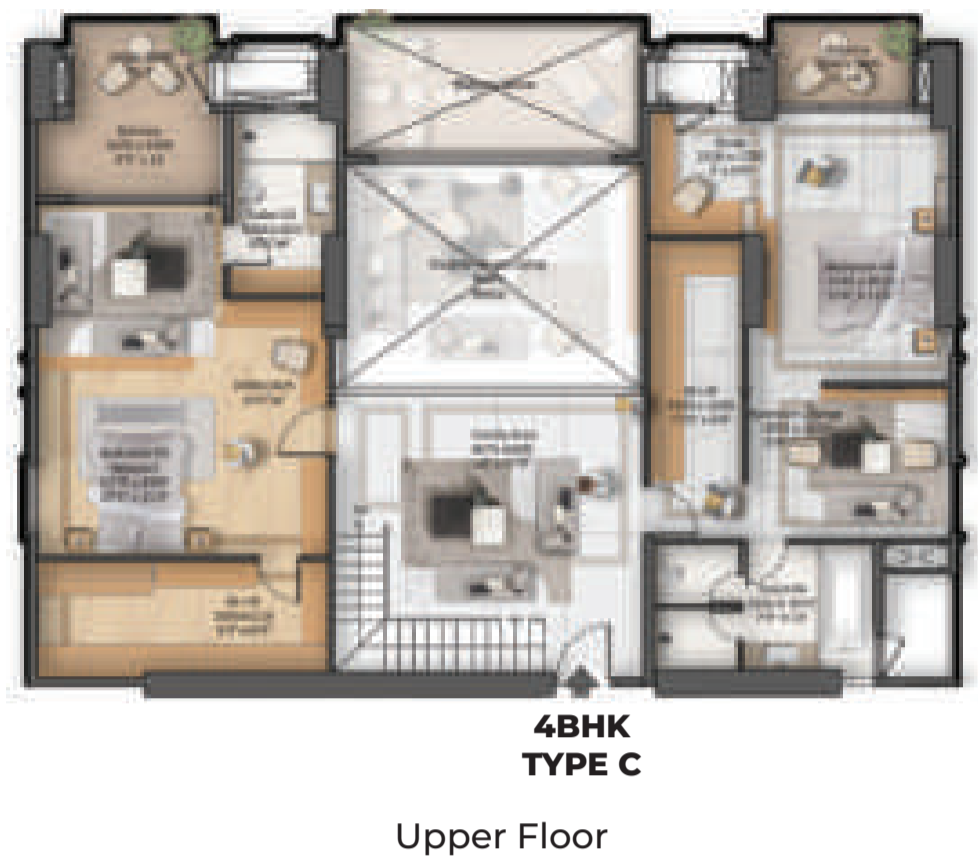
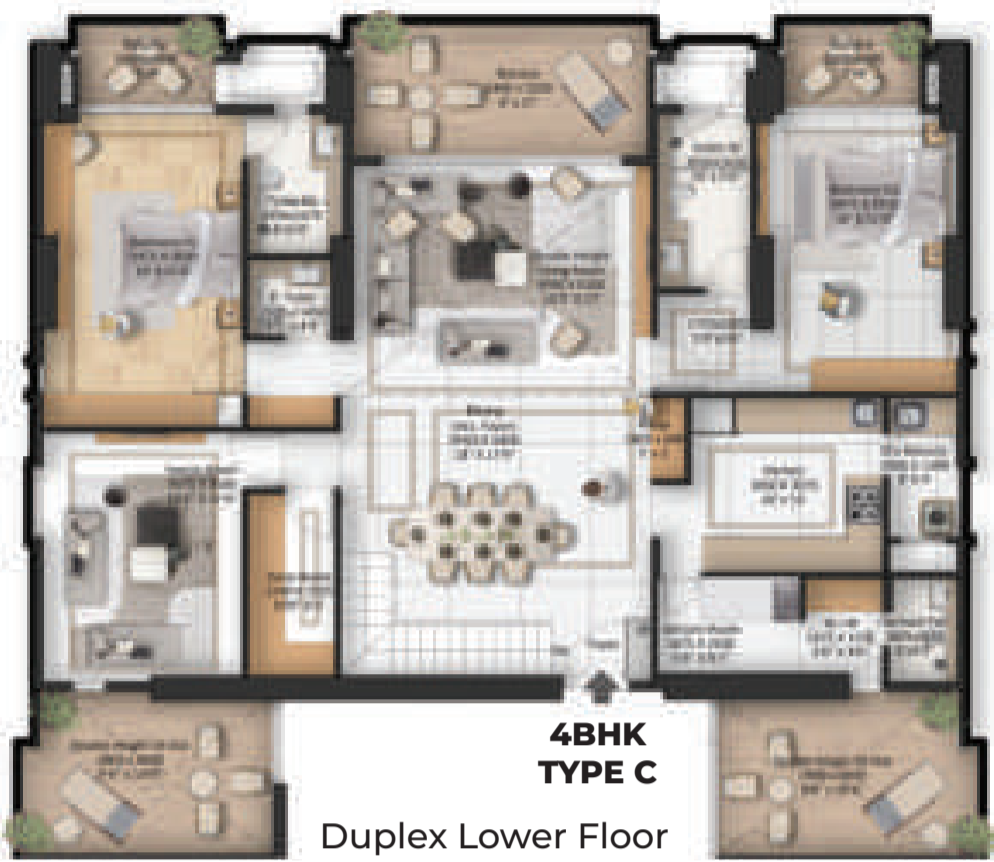


Key Plan (11-12,13-14,15-16)





# Duplex | 4 BHK | Type C Unit Plan



- Carpet Area : 3026 Sq.Ft. (Inc. Dry Bal)
- Balcony Area : 351 Sq.Ft.
- Built-Up Area : 3561 Sq.Ft.
- Double Height Sit-out : 285 Sq.Ft.
- Sale Area : 5115 Sq.Ft.



Key Plan (11-12,13-14,15-16)



# Duplex | 4 BHK | Type D Unit Plan



- Carpet Area : 2813 Sq.Ft. (Inc. Dry Bal)
- Balcony Area : 354 Sq.Ft.
- Built-Up Area : 3383 Sq.Ft.
- Double Height Sit-out : 303 Sq.Ft.
- Sale Area : 4902 Sq.Ft.

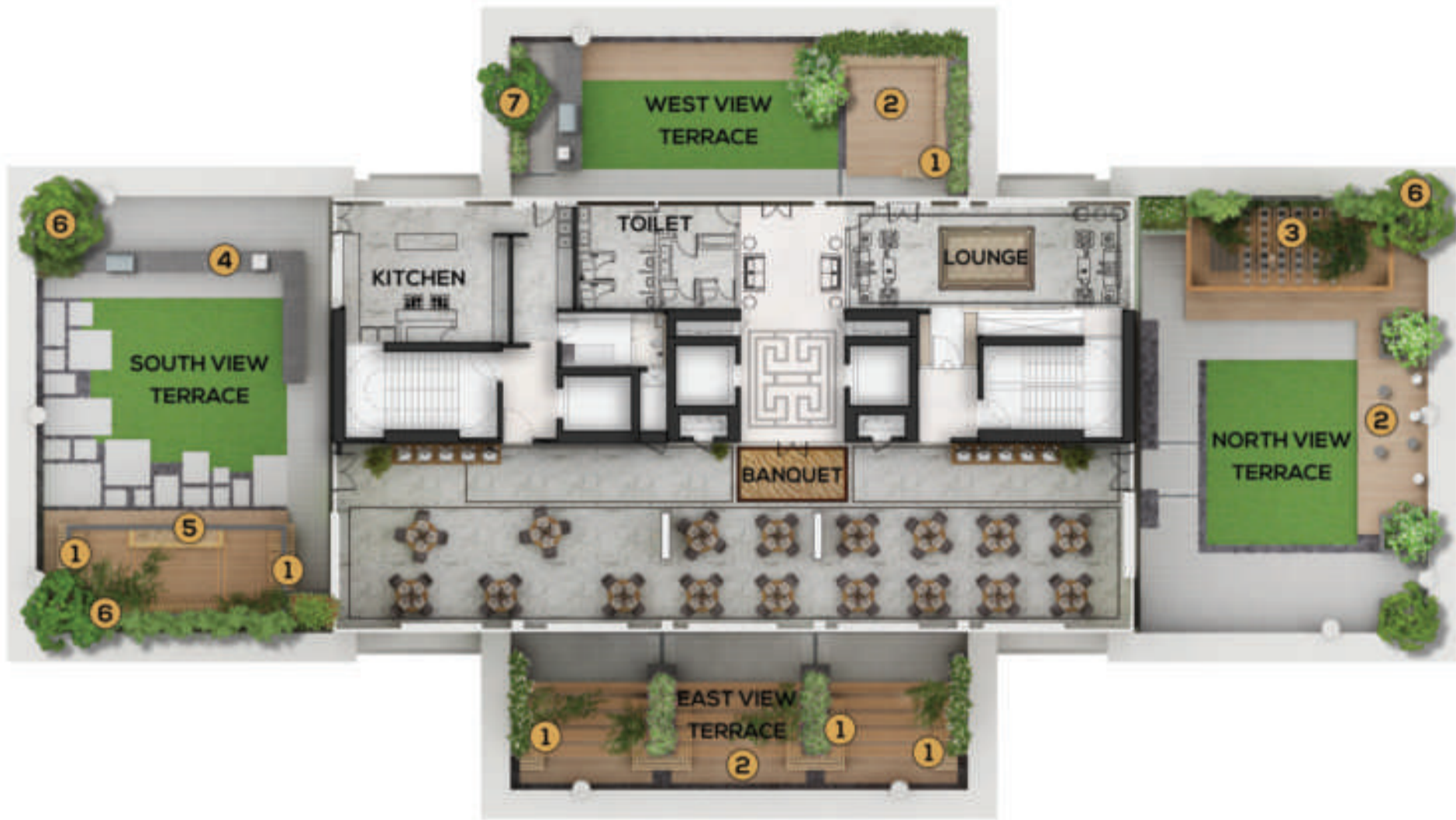


Key Plan (11-12,13-14,15-16)





# Sky Club House - 17th Floor



## Legends

- |                       |                   |
|-----------------------|-------------------|
| 1. Seating Ledge      | 4. Buffet Counter |
| 2. Raised Wooden Deck | 5. Fire Pit       |
| 3. Cocktail Counter   | 6. Planter        |

