



Journey To Success, Begins Here...





Owner's Manual

Project Introduction	01
Aerial View	04
GS Road Side View	07
Zoo Road Front View	10
The Atrium	11
Zoo Road Side View	14
Architect's Vision	16
Location	18
GS Road Front View	20
Office Vastu	22
Drop Off Area	24
Club House Amenities	26
Swimming Pool	27
Restaurant	30
Third Floor Office Terrace	32
Terraces Side View	34
Site Plan	36
Floor Plans	38-58
Developers Profile	60
Ark 1 Team	61

Table of Contents





ARK 1

BY IMPERIAL

Inspired by the mythical Noah's Ark, the vessel which protected thousands from an all-engulfing flood and steered their lives towards a new genesis, ARK 1 has been created to steer your business towards new horizons of unbridled success.

Similarly, Ark - 1 symbolizes a Robust solidity and is a testimonial to an incessant pillar of endurance, fortifying all its collaborators from any uncertainties that might occur.

WELCOME ONBOARD ARK 1!



Let ARK 1 be the Wind in your Sail.
Go Forth & Achieve your Dreams!





Arrive at the Upper Echelons of the Business World

Shape Your Future

07

//

"Architecture should speak of its time and place, but yearn for timelessness.

Frank Gehry

Where Grand Ambitions Go Onward & Beyond!



Artist's Impression

Thrive at a Burgeoning New—Age Business Location



The Atrium

"God is in the details."

Mies van der Rohe **||**

The atrium at ARK 1 personifies the glory of big ambitions! Designed to impress with high ceilings of 41ft and with stylish minimalistic aesthetics, this space stands proud as the perfect entryway to the world of ARK 1.



Artist's Impression

Follow your North Star and Ascend in Life.





Architect's Vision

To create a legend, a Living Wonder is a legacy in itself and IMPERIAL REALCON & KBA take the utmost pride in doing so. A seamless blend of creativity, class, design and functionality, we present to you ARK 1.

This masterpiece creates Eurythmy, mirroring the natural laws of Harmony and Beauty. It is also a tangible proof of the Northeast's growing role in the changing India. This success was not based overnight, but on reserves of human talent, Ingenuity and initiative. The project is a declaration of our capabilities and of the resolve of our people to work hand-in-hand on truly awe-inspiring projects.

ARK 1 is an unprecedented example of international amalgamation, a symbolic beacon of progress, and an emblem of the new dynamic and prosperous north east. It's a conglomerate between World-Class Commerce and a luxurious cascading boat that floats amidst flourishing trade opportunities that will spring post its launch.

A North Eastern wonder that will raise the bar across generations, we look forward to welcoming all to our humble abode.

"Beauty Perishes in Life, but is Immortal in Art"

Leonardo Da Vinci




The Address that Steers Your Business Ahead!


ARK 1 enjoys an excellent business location where it is proximate to all parts of the city via a strong transport network. The project opens towards both Zoo Road and GS Road, which makes it a premium and versatile address! Also, there are multiple conveniences within a close radius of the project, making it the perfect hub for seamless business!

Navigate your Way to Great Business!


Key Distances




College




Bank




Hospital



Market



Office



Park

- Shradhanjali Park - 1 Km
- State Bank of India - 500 Meters
- UCO Bank - 700 Meters
- Central Bank of India - 500 Meters
- Assam Secretariat - 2.3 Km
- Guwahati Railway Station - 6.0 Km
- Lokpriya Gopinath Bordoloi International Airport - 26.7 Km

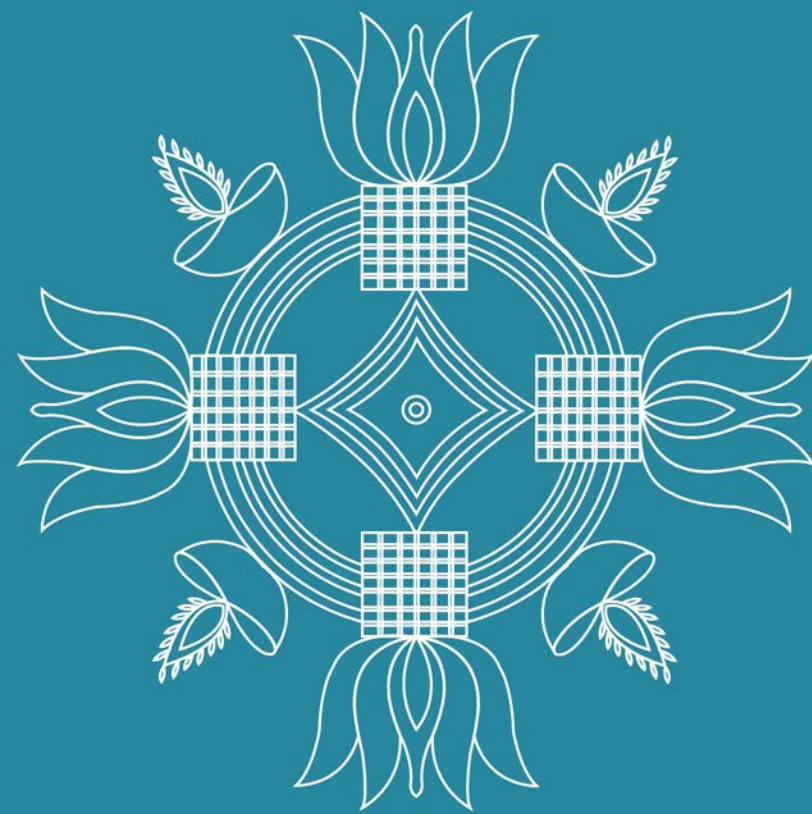
- Apollo Hospitals - 290 Meters
- Nightingale Hospital - 700 Meters
- Dispur Hospital - 550 Meters
- City Centre - 250 Meters
- The Regus - 300 Meters
- Central Mall - 700 Meters
- Shri Shri Ganesh Mandir - 2.1 Km
- Kamakhya Temple - 12.0 Km

Location



Your Quest for a Sterling Business Location Ends Here





"Success is every person's goal and empowering them to achieve it, is our mission"

Basant R Rasiwasia
Vastu Expert



At ARK 1, we have designed each nook and corner of the offices with 360-degree Vaastu that ensures you're in the right direction of success, at every point of time!

Innovative Vaastu Compliant Workplaces for your Professional Triumphs!

Stay anchored to good vibes!



Enter the World that Redefines Achievement



CLUB ARK 1

Facilities that Bring Ease to your Workdays



Work Hard. Rejuvenate Harder

Club ARK 1 brings you the perfect mix of leisurely amenities to infuse your workdays with both relaxation and rejuvenation. From a calming swimming pool, soulful spa sessions, to adrenaline rushes at the gym and playing time at the Pool Table – you'll find everything here to unwind after a long day of work.

Savour the Waves of True Leisure!



Swimming Pool



Restaurant



Gymnasium



Sundeck



Soak into Serenity after Chasing Grand Horizons



Stand Out in a City of Ideators & Achievers



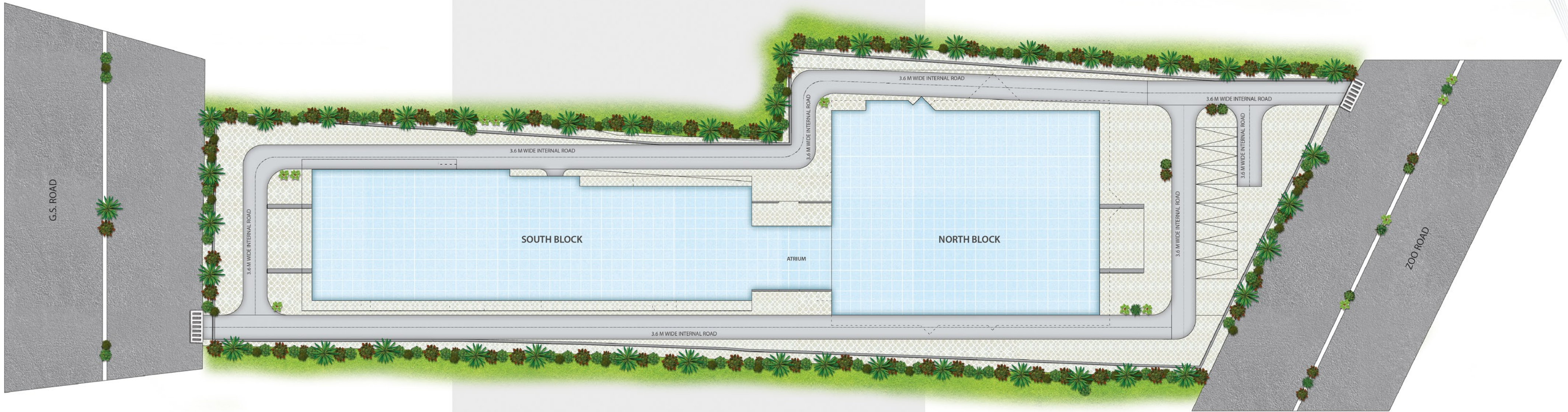
Let New Ways of Thinking Bloom amidst Nature



The Blueprint of Prosperity Beyond Compare



Site Plan



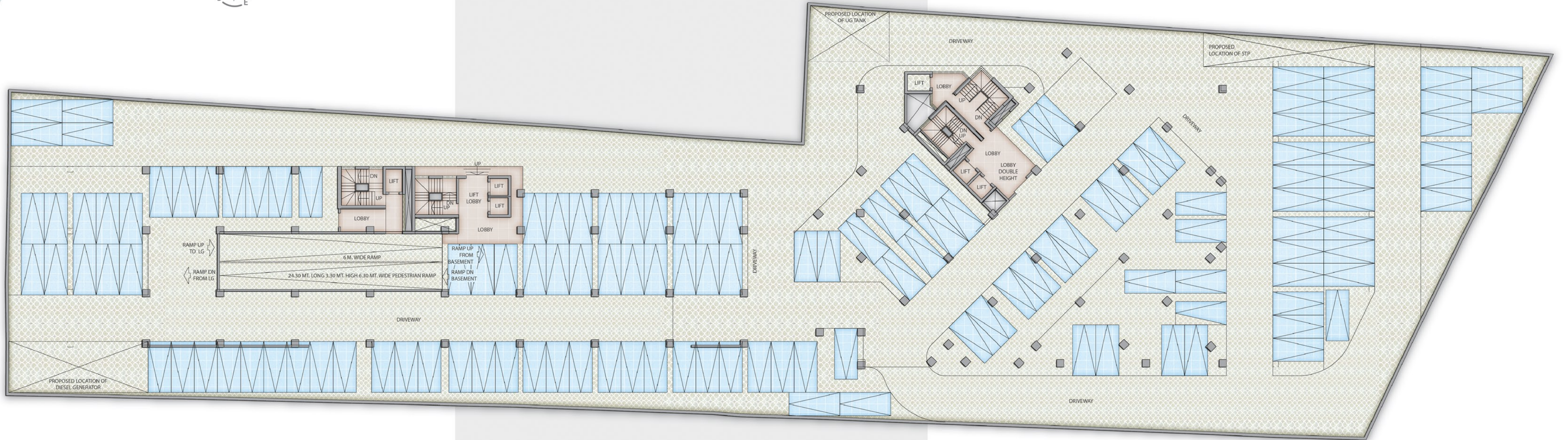
//

"We are what we repeatedly do. Excellence, then, is not an act, but a habit."

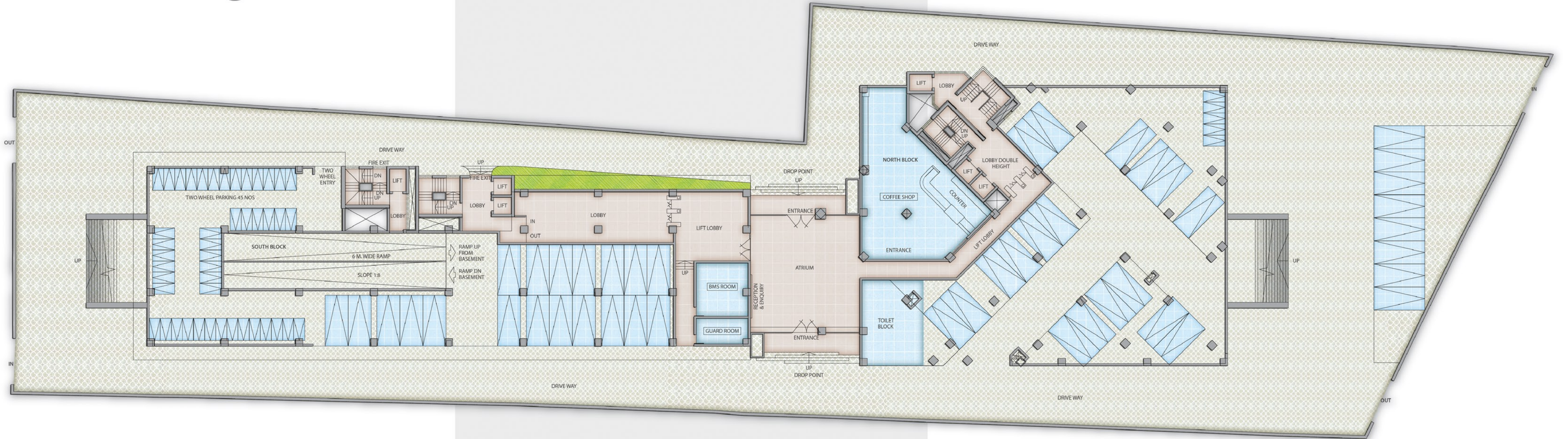
Aristotle

Workspaces that are a True Asset

Basement Floor

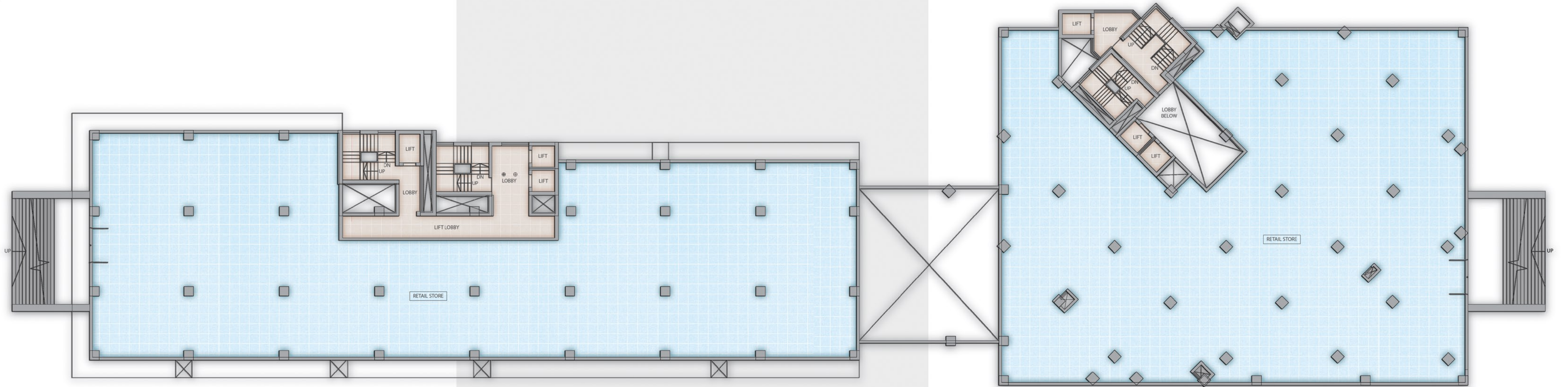


Lower Ground Floor



UNITS	CARPET AREA	BUA	SBUA
Coffee Shop	1834 SQ FT	1990 SQ FT	2647 SQ FT

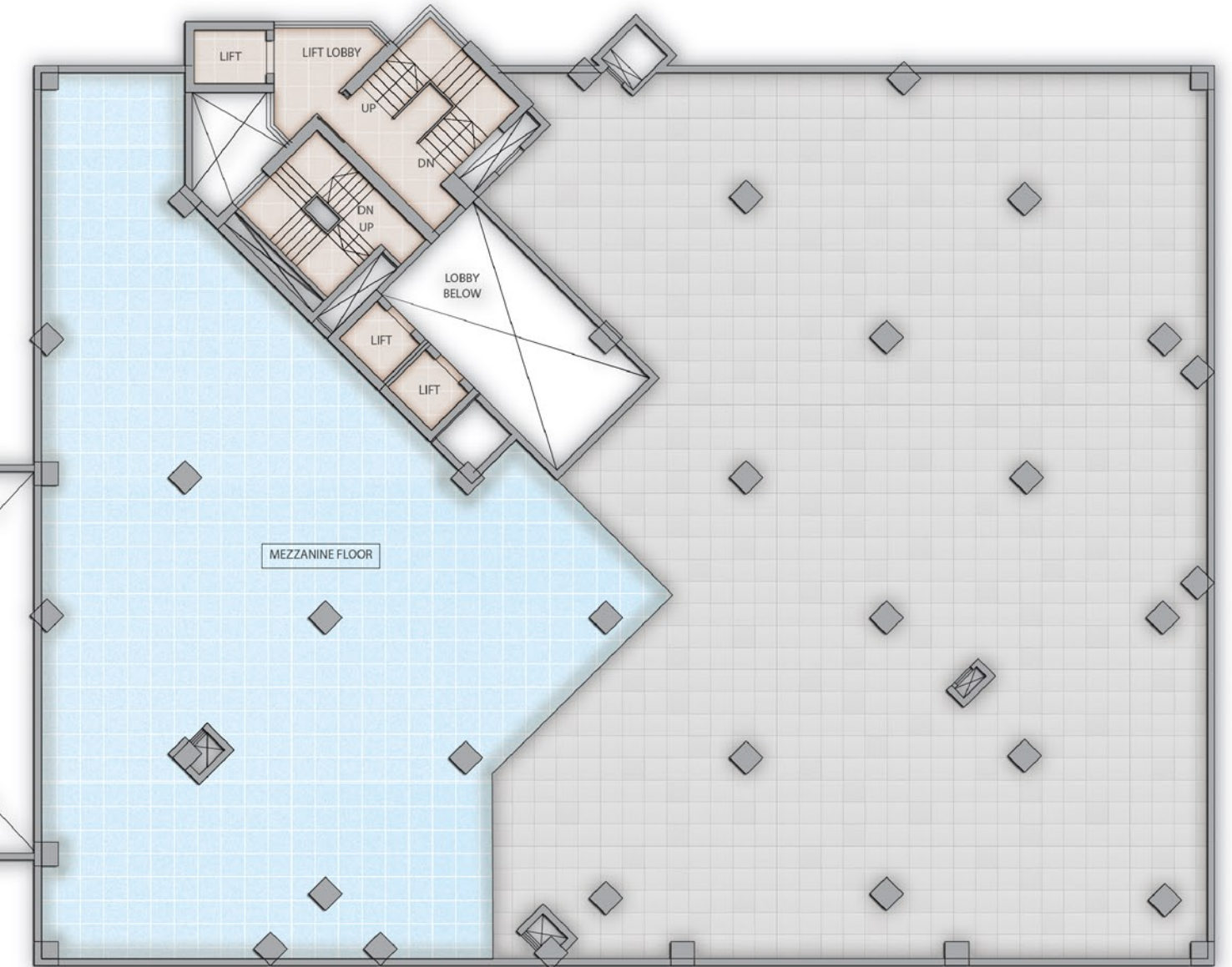
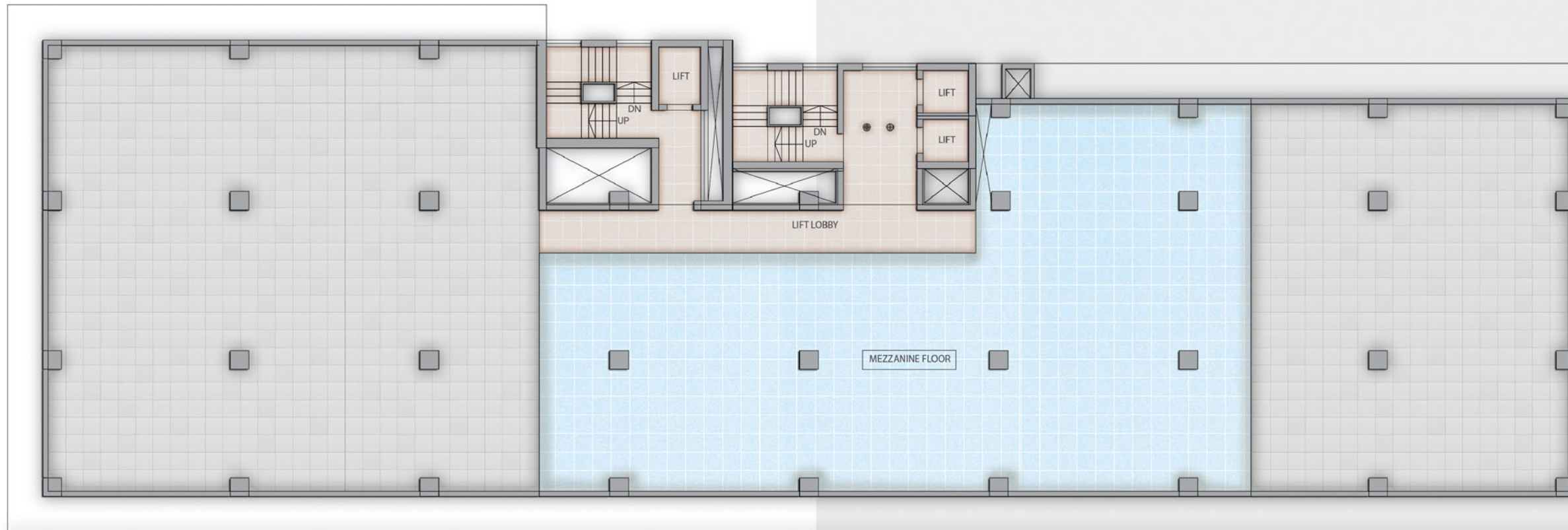
Upper Ground Floor



UNITS	CARPET AREA	BUA	SBUA
Retail Store	10,802 SQ FT	11,262 SQ FT	14,979 SQ FT

UNITS	CARPET AREA	BUA	SBUA
Retail Store	11,858 SQ FT	11,724 SQ FT	15,592 SQ FT

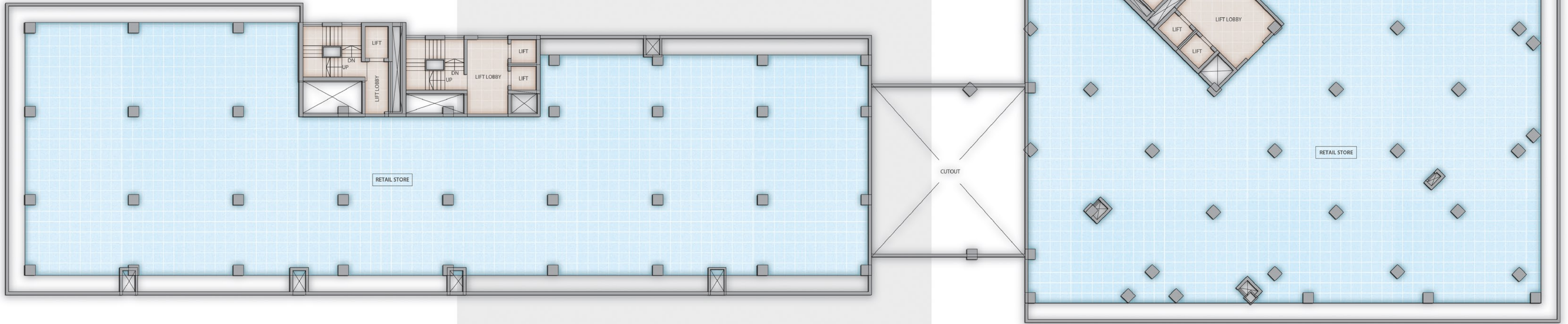
Mezzanine Floor



UNITS	CARPET AREA	BUA	SBUA
Retail Store	4022 SQ FT	4234 SQ FT	5631 SQ FT

UNITS	CARPET AREA	BUA	SBUA
Retail Store	4352 SQ FT	4487 SQ FT	5968 SQ FT

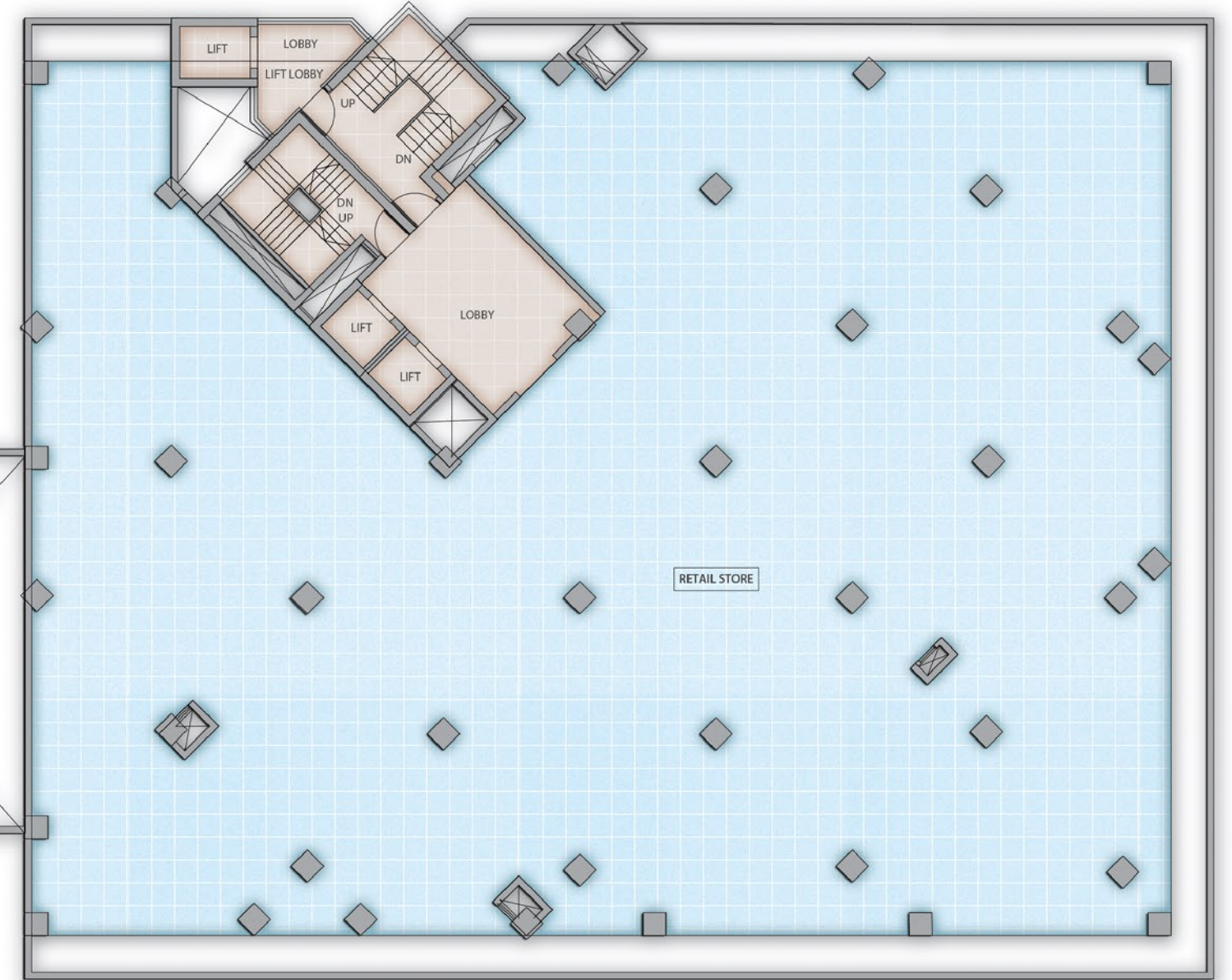
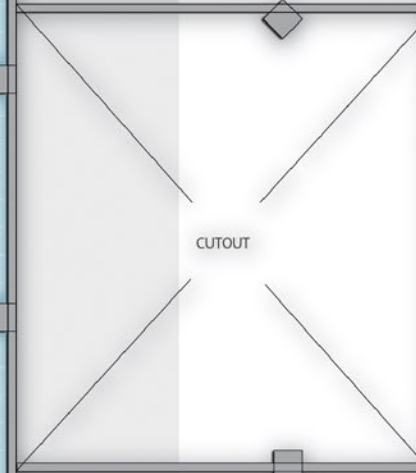
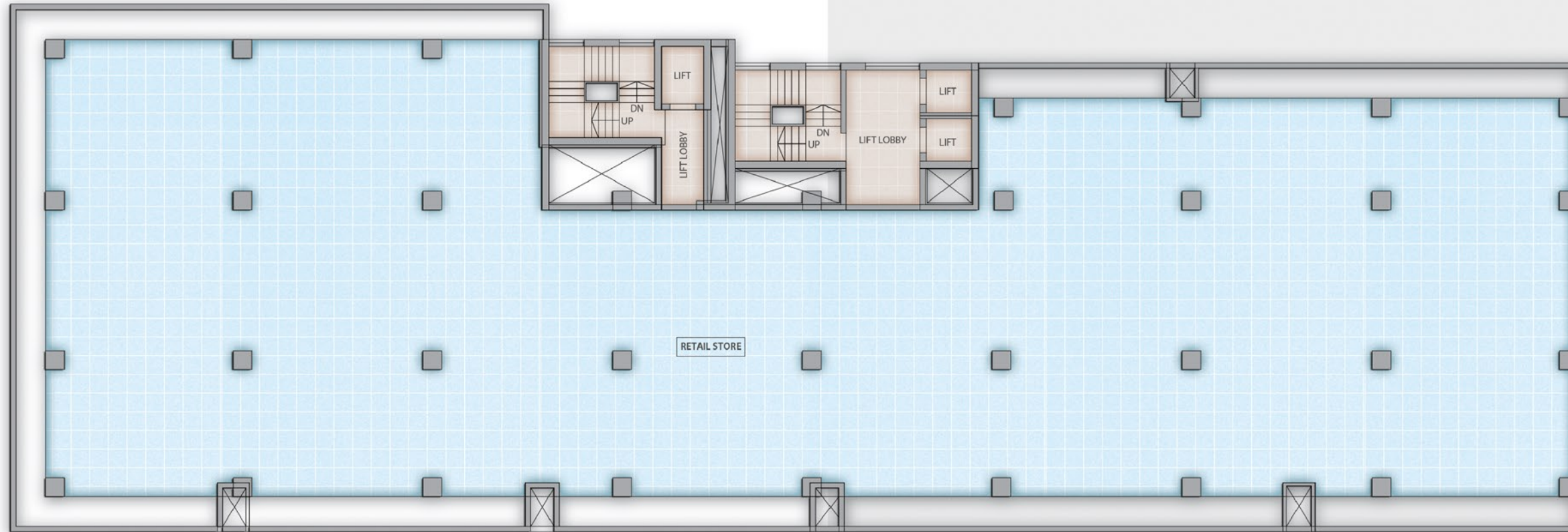
First Floor



UNITS	CARPET AREA	BUA	SBUA
Retail Store	13,233 SQ FT	13,747 SQ FT	18,284 SQ FT

UNITS	CARPET AREA	BUA	SBUA
Retail Store	12,934 SQ FT	13,418 SQ FT	17,846 SQ FT

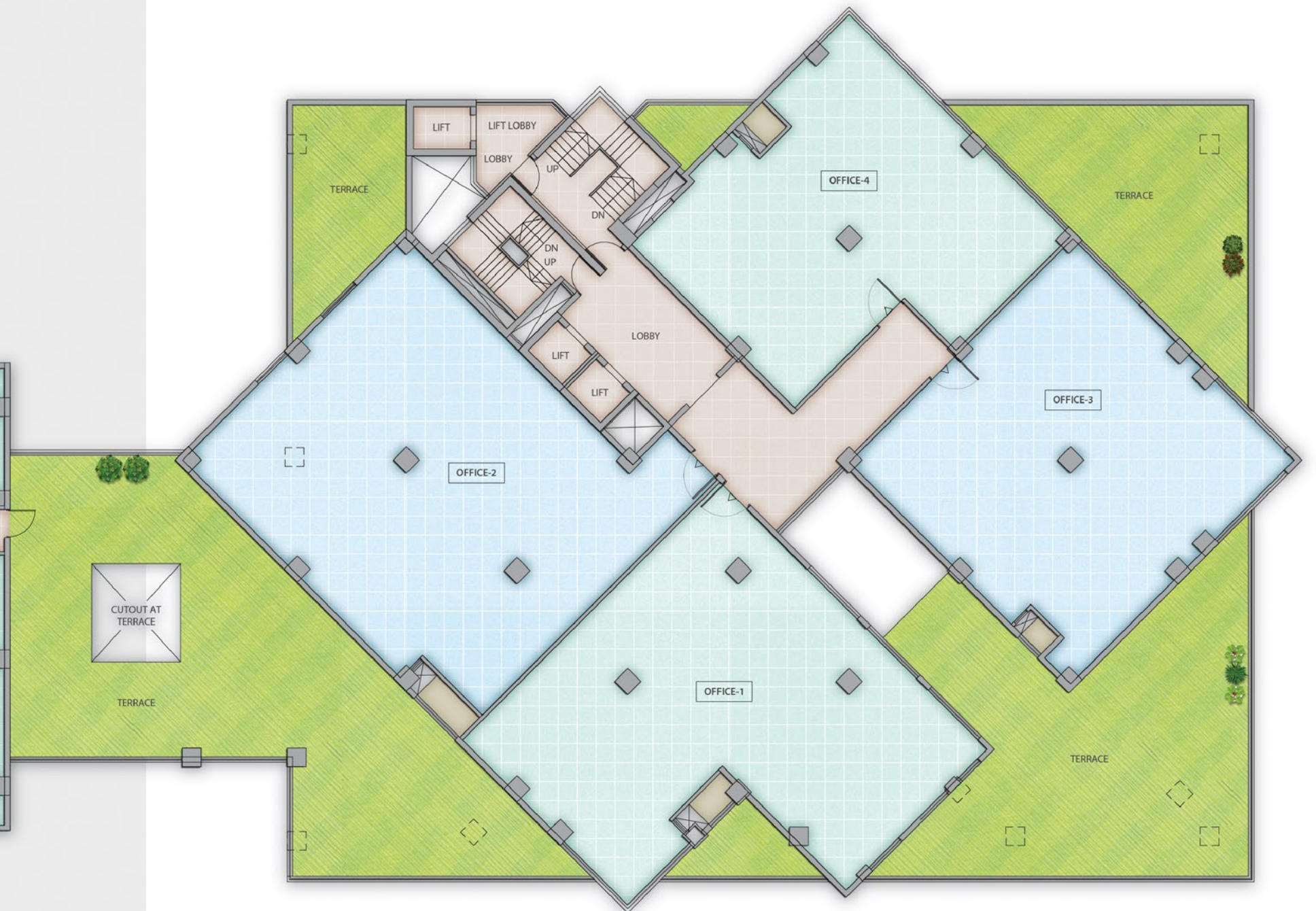
Second Floor



UNITS	CARPET AREA	BUA	SBUA
Retail Store	13,233 SQ FT	13,747 SQ FT	18,284 SQ FT

UNITS	CARPET AREA	BUA	SBUA
Retail Store	12,913 SQ FT	13,418 SQ FT	17,846 SQ FT

Third Floor



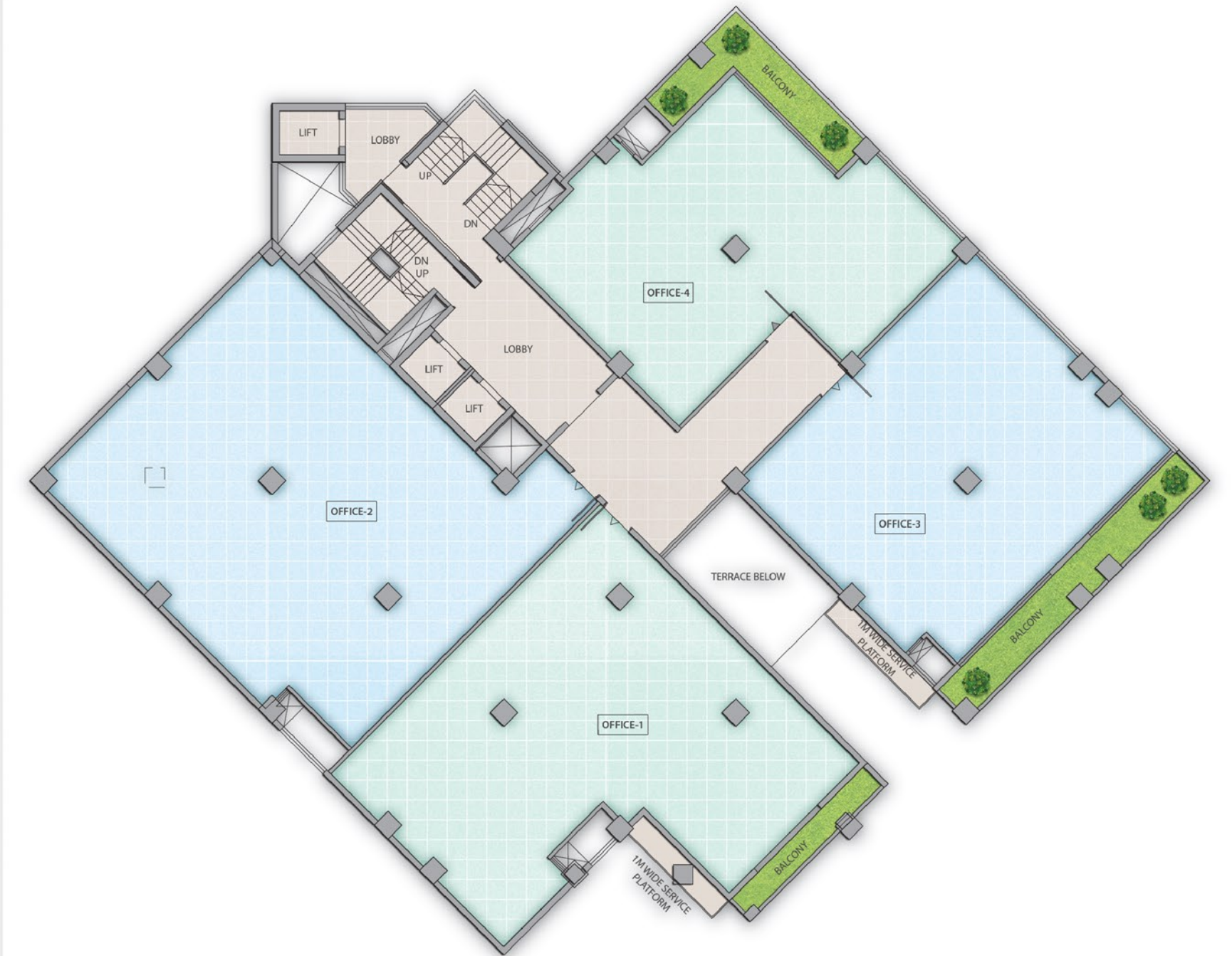
UNITS	CARPET AREA	BUA	BALCONY AREA	SBUA
Office - 1	951 SQ FT	1026 SQ FT	52 SQ FT	1434 SQ FT
Office - 2	1371 SQ FT	1452 SQ FT	88 SQ FT	2048 SQ FT
Office - 3	1372 SQ FT	1446 SQ FT	90 SQ FT	2043 SQ FT
Office - 4	1372 SQ FT	1446 SQ FT	90 SQ FT	2043 SQ FT
Office - 5	2851 SQ FT	2979 SQ FT	190 SQ FT	4215 SQ FT
Office - 6	1880 SQ FT	2006 SQ FT	149 SQ FT	2866 SQ FT
Office - 7	1488 SQ FT	1632 SQ FT	110 SQ FT	2317 SQ FT

UNITS	CARPET AREA	BUA	TERRACE AREA	SBUA
Office - 1	2195 SQ FT	2333 SQ FT	449 SQ FT	3700 SQ FT
Office - 2	2450 SQ FT	2587 SQ FT	202 SQ FT	3709 SQ FT
Office - 3	1926 SQ FT	2047 SQ FT	842 SQ FT	3843 SQ FT
Office - 4	1678 SQ FT	1797 SQ FT	200 SQ FT	2656 SQ FT

Fourth Floor



UNITS	CARPET AREA	BUA	BALCONY AREA	TERRACE AREA	SBUA
Office - 1	1821 SQ FT	1929 SQ FT	126 SQ FT	299 SQ FT	3131 SQ FT
Office - 2	1372 SQ FT	1447 SQ FT	90 SQ FT	-	2044 SQ FT
Office - 3	1372 SQ FT	1447 SQ FT	90 SQ FT	-	2044 SQ FT
Office - 4	2851 SQ FT	2979 SQ FT	190 SQ FT	-	4215 SQ FT
Office - 5	1880 SQ FT	2006 SQ FT	149 SQ FT	-	2866 SQ FT
Office - 6	1223 SQ FT	1350 SQ FT	81 SQ FT	131 SQ FT	2077 SQ FT

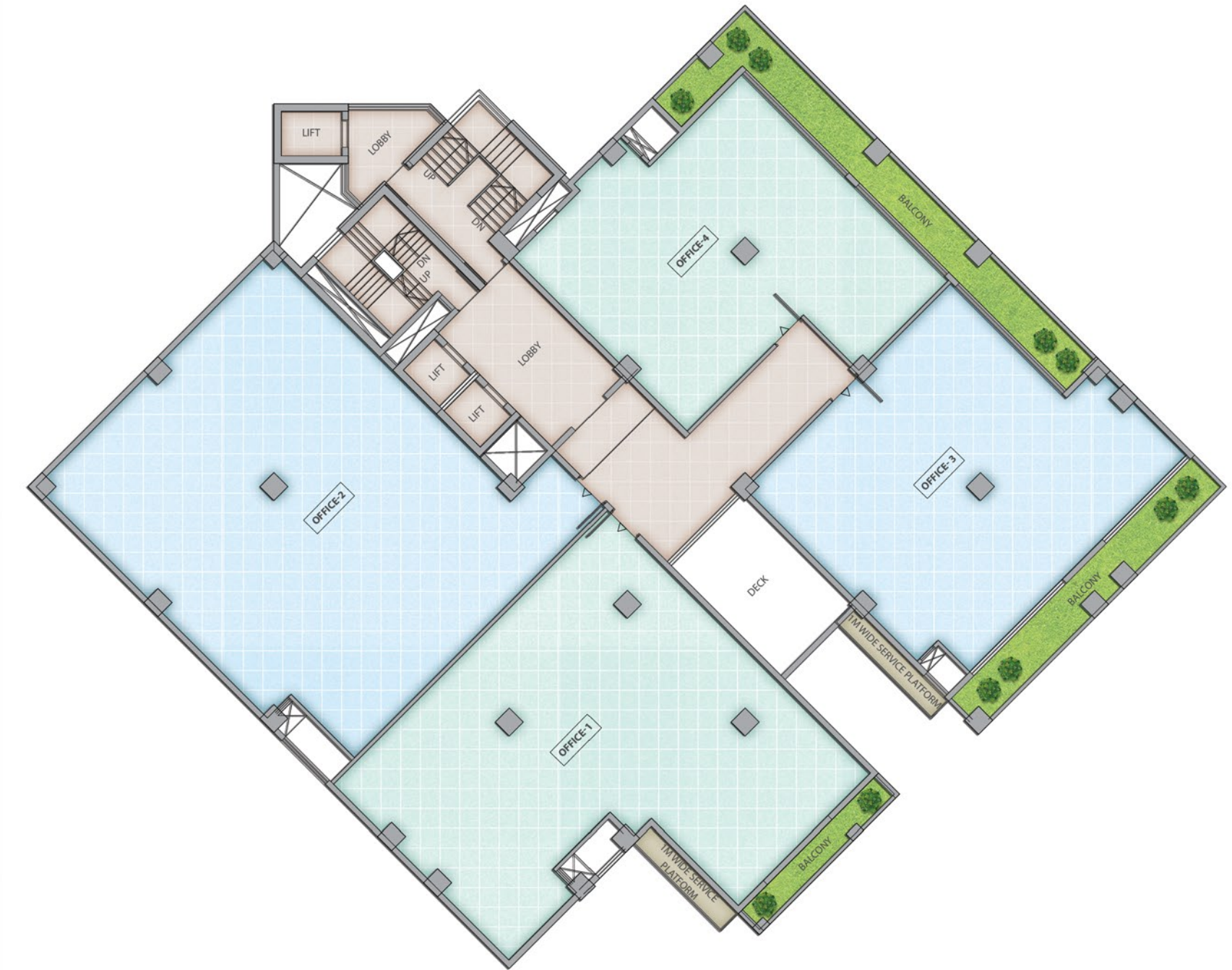


UNITS	CARPET AREA	BUA	BALCONY AREA	SBUA
Office - 1	2032 SQ FT	2164 SQ FT	100 SQ FT	3011 SQ FT
Office - 2	2450 SQ FT	2593 SQ FT	-	3449 SQ FT
Office - 3	1667 SQ FT	1773 SQ FT	271 SQ FT	2719 SQ FT
Office - 4	1469 SQ FT	1581 SQ FT	211 SQ FT	2383 SQ FT

Fifth Floor



UNITS	CARPET AREA	BUA	BALCONY AREA	TERRACE AREA	SBUA
Office - 1	1385 SQ. FT	1485 SQ. FT	92 SQ. FT	256 SQ. FT	2438 SQ. FT
Office - 2	1372 SQ. FT	1447 SQ. FT	90 SQ. FT	-	2044 SQ. FT
Office - 3	1372 SQ. FT	1447 SQ. FT	90 SQ. FT	-	2044 SQ. FT
Office - 4	2851 SQ. FT	2979 SQ. FT	190 SQ. FT	-	4215 SQ. FT
Office - 5	1880 SQ. FT	2006 SQ. FT	149 SQ. FT	-	2866 SQ. FT
Office - 6	1002 SQ. FT	1113 SQ. FT	65 SQ. FT	112 SQ. FT	1716 SQ. FT

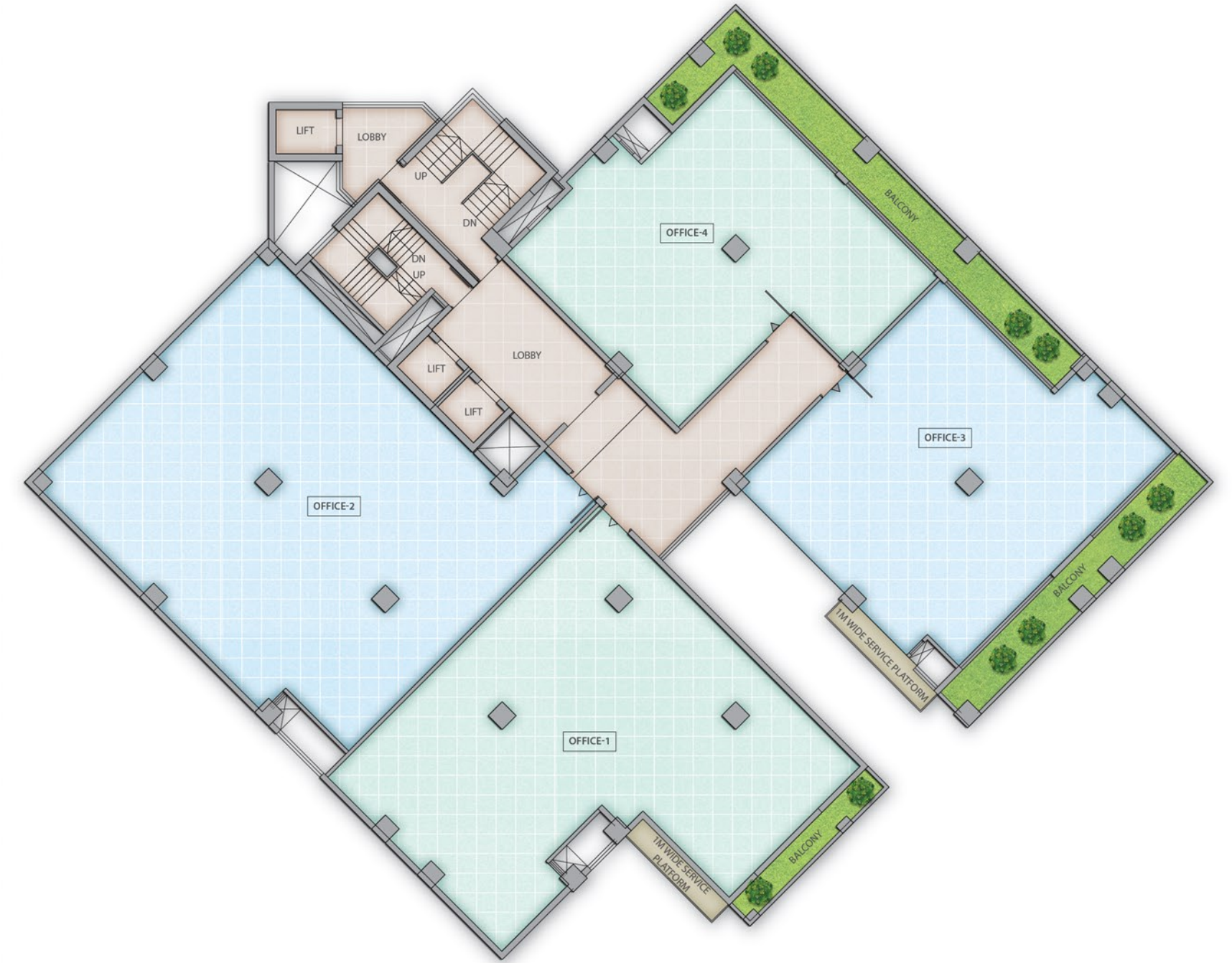


UNITS	CARPET AREA	BUA	BALCONY AREA	SBUA
Office - 1	2032 SQ. FT	2164 SQ. FT	103 SQ. FT	3015 SQ. FT
Office - 2	2450 SQ. FT	2593 SQ. FT	-	3449 SQ. FT
Office - 3	1540 SQ. FT	1646 SQ. FT	271 SQ. FT	2550 SQ. FT
Office - 4	1359 SQ. FT	1466 SQ. FT	451 SQ. FT	2550 SQ. FT

Sixth Floor

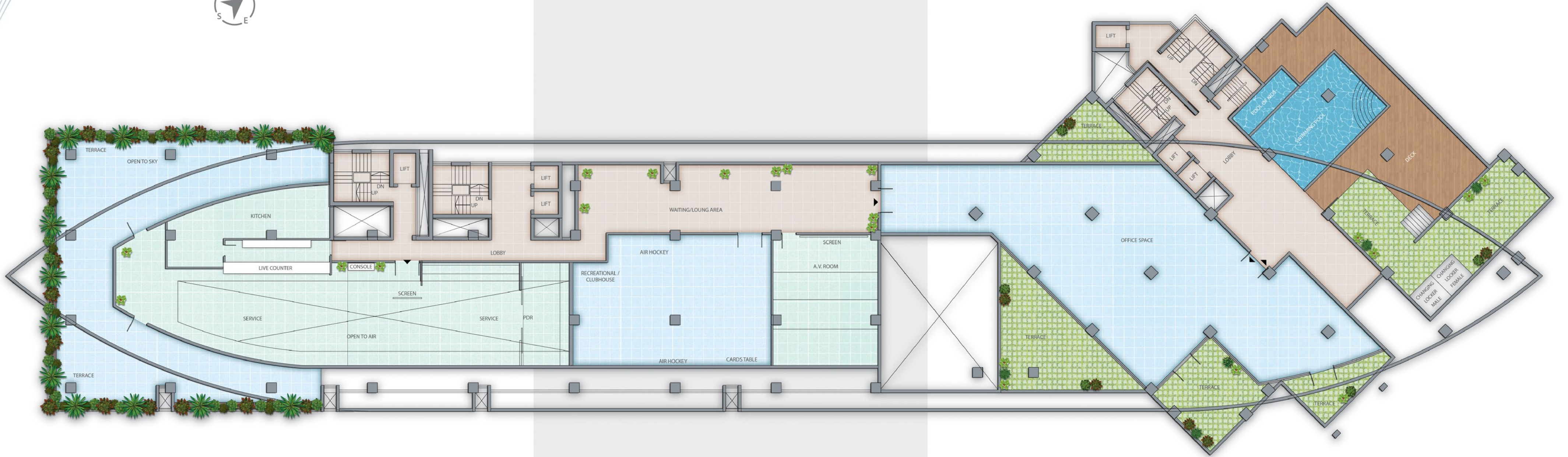


UNITS	CARPET AREA	BUA	BALCONY AREA	TERRACE AREA	SBUA
Office - 1	2380 SQ FT	2536 SQ FT	79 SQ FT	424 SQ FT	4042 SQ FT
Office - 2	2332 SQ FT	2453 SQ FT	125 SQ FT	-	3429 SQ FT
Office - 3	4768 SQ FT	4983 SQ FT	339 SQ FT	-	7078 SQ FT



UNITS	CARPET AREA	BUA	BALCONY AREA	SBUA
Office - 1	2032 SQ FT	2164 SQ FT	103 SQ FT	3015 SQ FT
Office - 2	2450 SQ FT	2589 SQ FT	-	3443 SQ FT
Office - 3	1540 SQ FT	1646 SQ FT	271 SQ FT	2550 SQ FT
Office - 4	1359 SQ FT	1466 SQ FT	451 SQ FT	2550 SQ FT

Seventh Floor



UNITS	CARPET AREA	BUA	BALCONY AREA	TERRACE AREA	SBUA
Recreational/ Clubhouse	2695 SQ FT	2835 SQ FT	662 SQ FT	-	4651 SQ FT
Restaurant	3770 SQ FT	3996 SQ FT	838 SQ FT	1261 SQ FT	8106 SQ FT

UNITS	CARPET AREA	BUA	BALCONY AREA	SBUA
Office	3113 SQ FT	3321 SQ FT	825 SQ FT	5514 SQ FT

Developing Possibilities

Experience The World of Success With Imperial Realcon

Imperial Group is proud to present ARK 1 as the newest gem in our crown! The project stands tall and distinguished in the heart of Guwahati's skyline as a powerful presence and the pinnacle of sophisticated workspace in the city!

Designed to be synonymous with luxury offices, Ark 1 brings the perfect balance of practical comforts and elite aesthetics, along with a unique architectural design and a business address that is truly a class apart. Work in premium, landmark offices in the heart of Guwahati, and find ample avenues of modern leisure as well.

The Imperial Group's commitment to supreme quality, dedicated management and setting new benchmarks of luxury shines through ARK 1. Step into ARK 1 and set sail towards grander horizons!

//

"To be successful, you have to have your heart in your business, and your business in your heart."

Thomas Watson



Developers



101, 1st floor, B.R Tower
Janapath Lane, Ulubari
Guwahati - 781007
Contact - 9435406442

Principal Architect



KETAN BHIMANI & ASSOCIATES
Mumbai

Resident Architect



G S Road, Guwahati

Structural Engineer

Sanjiv Parekh
SPA Consultants
Kolkata

Vastu Expert

Basant R Rasiwasia
Vaastushastra Expert, Mumbai
www.revivalvaastu.com

Site Address

Adjacent To Manyavar & Mohey,
G S Road, Guwahati

DISCLAIMER

This brochure is not a legal document. It describes the conceptual plan to convey the intent and purpose of ARK 1. The images are imaginary and the details mentioned in this brochure are tentative and subject to change at the sole discretion of the developer and /or architects.

Concept, Design & 3D Architectural Views **PENINSULAR** 098309 40401 | www.peninsular.asia

The Added Value of Great Teamwork

ARK 1 is the result of highly skilled, tireless and passionate teamwork. We thank each of our project associations for putting in their very best and making ARK 1 a workspace to reckon with!



